

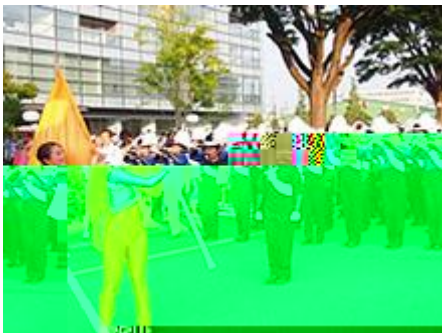
Isuzu Summer Festivals 2015

Both Fujisawa Plant and Tochigi Plant held their summer festivals in July 2015. The festivals were intended to show appreciation to the employees and their family members for their daily efforts as well as to the local community and residents for their cooperation.

Fujisawa Plant welcomed 21,000 visitors and Tochigi Plant 7,700. The local residents also enjoyed the festivals.



Visitors entertained by a parade from the local community's Shonandai High School brass band, "Mikoshi" (portable shrine) and other events. Big fun continued through the closing fireworks.



The Shonandai High School brass band



"Mikoshi" (portable shrine)

Tochigi Plant held the festival under the theme "Thanks for Employees and their family members, the local people and Love for Family, Love for Community".

Participants enjoyed several events through this summer festival.



Several events were enjoyed by participants. (Japanese Drum :left, Experience of making Japanese "Soba" :center, Belly dance show :right)

